



VOLA 
RACING *Equestrian Sports*

FLY TO SUCCESS

35 YEARS OF RACING

For more than three decades we have been creating innovative and high-tech products.

Vola is a software company where we develop timing and video software.

It's also a whole hardware dimension with the resale of video panels and hardware such as: timing devices, photocells, wireless radio transmissions, gates, start clocks, video finish cameras, video panels, etc. Here is a non-exhaustive list of the capabilities of Vola's software and hardware offer:

- time and manage the results of a competition,
- create video overlays,
- broadcast live,
- generate data and images,
- drive a LED panel,
- etc.

Our aim is to provide solutions that are simple
and of the highest quality,
to manage your event from A to Z.

	PAGES
The Equestre-Pro Suite	04-05
Zoom on Equestre-Pro	06-07
Zoom on Display-Equestre-Pro	08-09
Zoom on Publish-Equestre-Pro	10-11
Zoom on Video-Equestrian-Pro	12-13
Video Walls	14-15
Service & Video Finish Camera	16-17
Tips & Tricks	18-19
Price tables	20-21
Other Suites	22-23





S U I T E

Equestre-Pro

Take your competition around the world with the Equestre-Pro Suite. A complete range of software to create your own event. Get started!



Discover the scope of the Equestre-Pro Suite software



Equestre-Pro

Timing software,
« Master » of the Suite



Display-Equestre-Pro

Display live results
on all screens



Publish-Equestre-Pro

Centralise the data and let the
world discover it



Video-Equestre-Pro

Create live clips and pictures
with up to 7 cameras



Users Manuals

Go to vola.fr,
in the Knowledge Base section
to learn more.



Software support

Fill in the online form at
«VISIT www.vola.fr/support/report.php
for all requests for assistance.

TECHNICAL LISTING

- Race formats: show jumping, cross country, dressage, eventing.
- Import/Export of competitions and results from FEI, FFE, FFE-SIF federations.
- Filtering for customised rankings.
- Support of timers and decoders: CP545, MyLaps X2, Race Results, TIMY, etc.
- Simple, powerful and flexible timing with event management adapted to all scales and repeats.
- Up to 2 intermediates.
- Calculation of penalties.
- Support for scoreboards: Vola CA8-15, Alge DLine, Omega, Microgate, etc.
- Fully customisable live results publication on TV and internet.
- Fully customizable scoreboard display.
- Championship management with instant calculations.
- Preparation of start lists with estimated transfer time between events.
- Customisation of editions: fonts, sizes, colours, logos, columns, etc.
- Printing of master lists, start lists, rankings, challenges and championships.
- Management of the race office in network with the timing.
- Time several tracks in parallel with the multi-course mode.
- With the Entry mode, riders can enter on a touch terminal.
- Manage the invoicing and the distribution of the winnings.

CONFIGURATION EXAMPLE

The link between the installations will be made by wifi bridges.

4 careers to be filmed = 4 cameramen

1 person is needed in a timekeeping booth to manage the timing and video.

2 giant panels
2 entry terminals
1 TV display

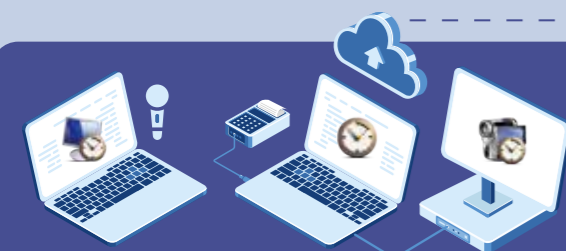
Commitment terminal

Warm-up career

NEXT COMPETITOR AT THE START

TV with information

SENDING THE DATA



JURY STAND

Timer / Headset

1 PC with Display-Equestre-Pro for the speaker
1 PC to manage the timing and the live
1 video generator with Video-Equestre-Pro
1 operator to film the rider during the race

SECRETARIAT & BILLING

1 PC with Equestre-Pro

Commitment terminal

1 PC with Equestre-Pro

Publish-Equestre-Pro:
Web platform for
viewing and
recording live texts
and video clips.

WebTV:
Internet television
channel, website of
editorial content that
the user can access
by streaming.

Competition career no. 1

Competition career no. 2

Competition career no. 3

Competition career no. 4

Centralise the results of
several careers,
simultaneously, on the
same platform.

LEGEND

Texts in brown:
These products are intended to
manage the timing of the race.
Texts in blue:
These products are intended to
manage the video system of the race.

Equestre-Pro

Display-Equestre-Pro

Publish-Equestre-Pro

Video-Equestre-Pro

Output options
WebTV / HDMI / Blackbox

Independent softwares

Scoreboard-Pro

ZOOM ON

Equestre-Pro



Equestre-Pro

Timing software,
« Master » of the Suite

Equestre-Pro is a professional timing software developed for equestrian competitions such as show jumping, dressage, cross country and eventing. It allows the management, timing, processing and editing of results. The Equestre-Pro suite will adapt to your national and international races.

Disciplines

CSO, Dressage, Cross, Eventing.

Chrono compatibility

Alge, BeChronized, Chronelec, FDS Timing, Microgate, Mylaps, myWER, Omega, Race Results, Summit, Tag Heuer, TMR, Vola.

Scoreboard compatibility

Adaptive, Alge, Microgate, Omega, Radiocom, Tag Heuer, Timetronics, Vola. + custom-made

Specifications

> PC with Windows 7/8/10.
> Screen resolution: 1920x1080 mini.
> USB port for protection key.

FONCTIONNALITIES

- > Simple, powerful and flexible timing with event management.
- > Advanced communication with timers (channel management, unloading).
- > Start / Finish / 2 intermediates / Phase 2 support / Time stop (jury bulb).
- > Up to 4 careers simultaneously.
- > 2 simultaneous scoreboards.
- > Display of results live on TV and Internet.
- > Display on fully customizable scoreboards.
- > Championship management with instant calculations.
- > Preparation of start lists with estimated transfer time between events.
- > Printing of master lists, start lists, rankings, challenges and championships.
- > Import and export of competitions and results from federations.

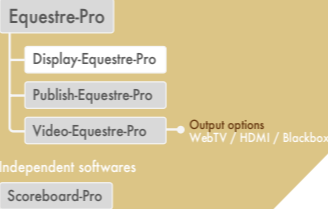
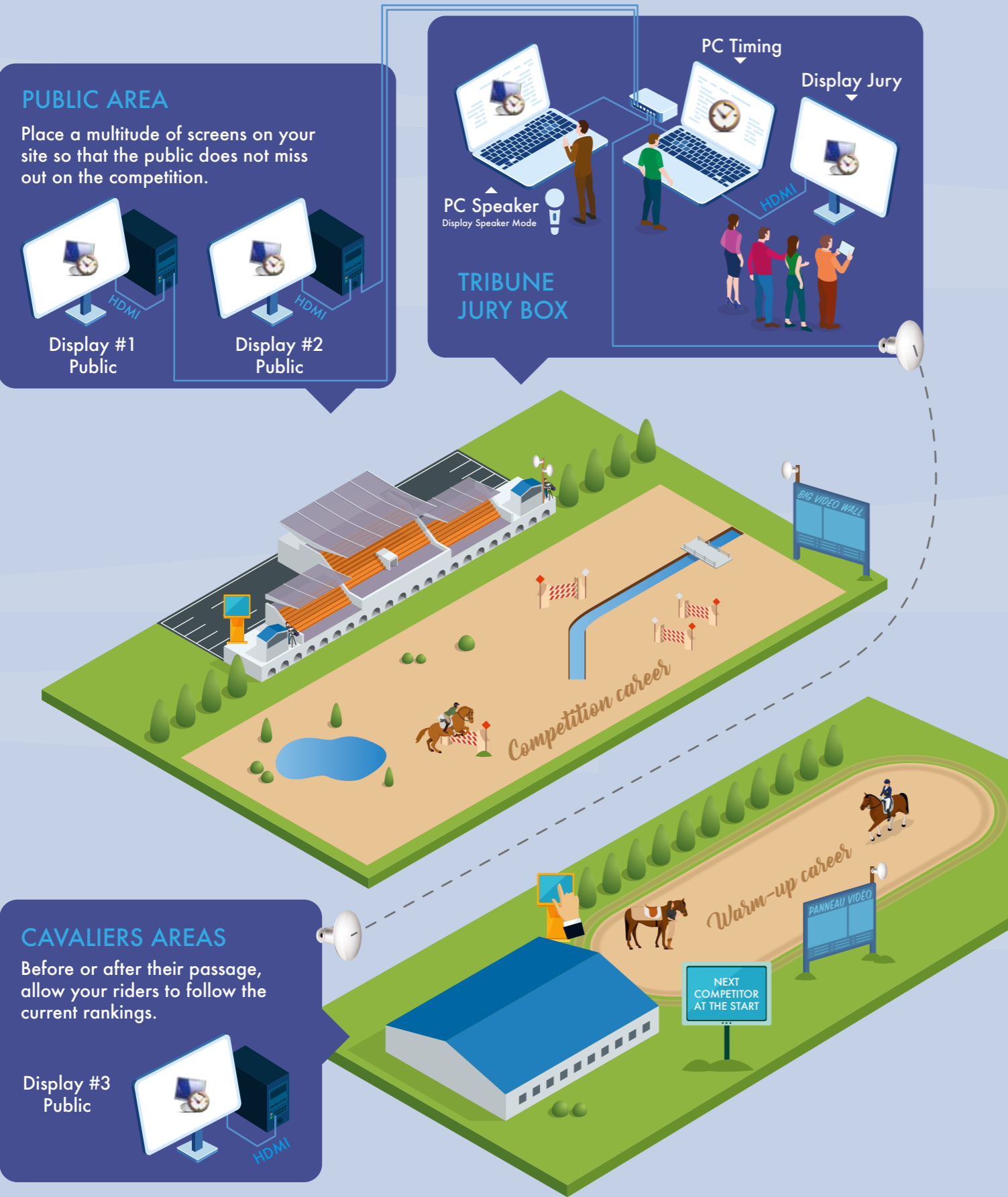
SINGLE-POST MODE

- > Ideal for your national competitions.
- > Registration of participants.
- > Timing management.
- > Print or export editions in PDF format.

MULTI-STATION MODE

- > Manage the Race office in a network with timing.
- > Time several tracks in parallel with the multi-course mode.
- > With the entry mode, riders can enter on a touch terminal.
- > Manage invoicing and the distribution of winnings.





ZOOM ON Display

Display-Equestre-Pro
Display live results
on all screens

With Display-Equestre-Pro you can broadcast live on a video network the start lists, the rankings and the next competitors to start. Customise the whole interface to your image thanks to the management of columns, colours or sizes.

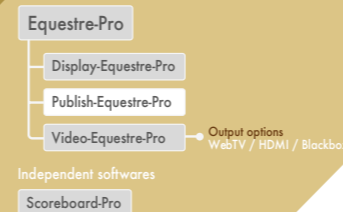
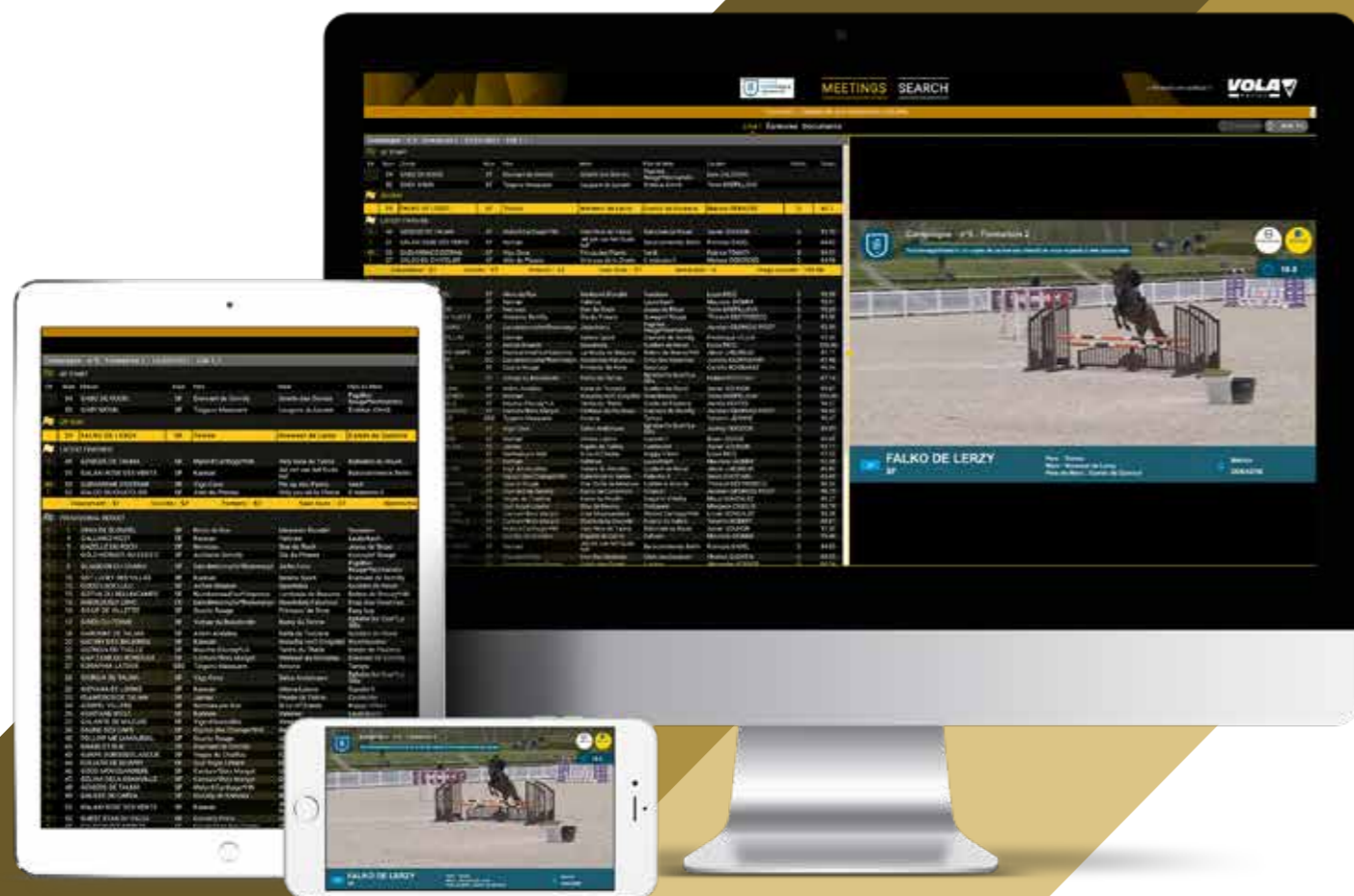
REMOTE DISPLAY

You can run Display-Equestre-Pro on the same PC as Equestre-Pro, or run it on a remote computer using an RJ45 link or a Wifi bridge.



- FEATURES**
- > View live changes in the rankings.
 - > Choose the layout of your rankings.
 - > Resolution, colours, font sizes.
 - > Rotating or fixed page mode depending on the number of classifieds.
 - > Indispensable tool for your announcer.
 - > Ideal for the paddock, the stands as well as the lounges or restaurants.





ZOOM ON Publish



Publish-Equestre-Pro

Centralise the data and let the world discover it

Publish is a software that allows you to send live information about your competition on the internet.

A dedicated web page for your structure.

On your web space, you will be able to see the live competitions and the PDF documents that you have sent (start list, results, other information...). Furthermore, Publish has the advantage of memorising the races you have run. Thus, you keep a history of the results which can be visualized the following days, during committee meetings, family consultations, or verifications of the results between friends. Publish is the basis for the operation of WebTV. On the management side, you have

All these functions are designed to be ergonomically integrated into the environment: Publish can be viewed on a smartphone as well as on a computer.

an administrator space that allows you to delete races, but also to view the traffic of your web page. You can see the number of pages viewed, the number of documents, clips viewed and downloaded. Properly integrating access to Publish into your website will allow you to create traffic on your site and thus enhance your services.

The structure of Publish automatically adapts to your needs (live, WebTV, PDF publications) and your number of races.

PUBLISH RATES

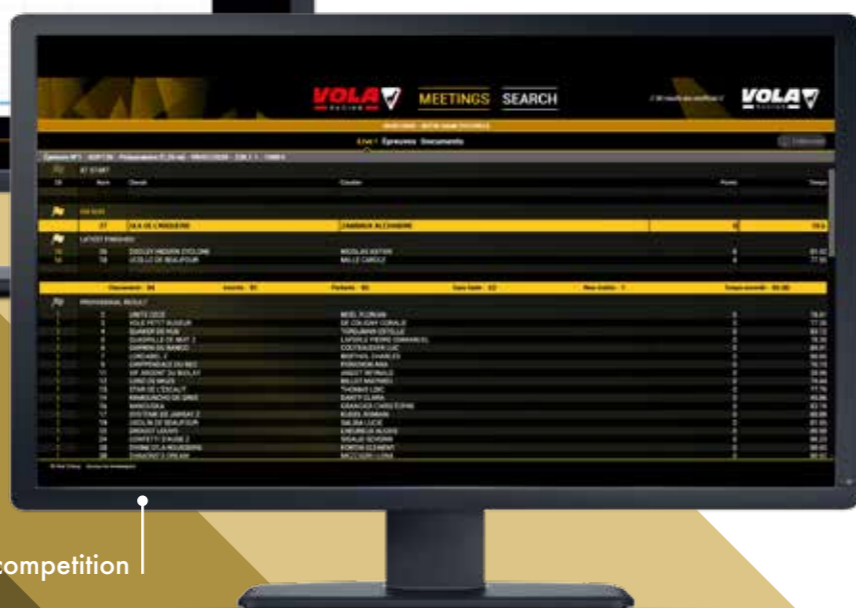
Publish works on an annual subscription basis. The subscription gives access to your web page. The price of Publish-Equestre-Pro is 720€ HT/year.

WEBTV OPTION

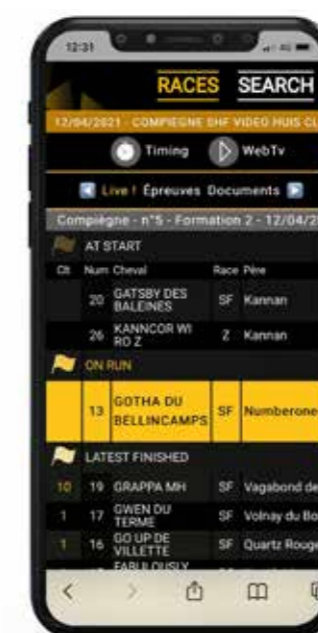
WebTV is a function of the software Video-Equestre-Pro which works in the form of an annual subscription. The price of WebTV-Pro is 960€ HT/year.



Administrator interface: follow the evolution of your competition thanks to the statistics!



Example of a live competition



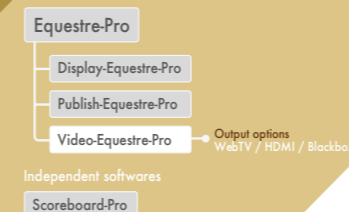
In the video control interface, connect inputs, outputs and media, thanks to the virtual cabling system!

7 input cameras
Your choice:
IP, HDMI, SDI, USB

4 outputs available

7 media usable

Video Control
After wiring up the video control room, discover your working interface for viewing all cameras, media and outputs.



ZOOM ON *Vidéo*



Video-Equestre-Pro

Create live clips and pictures with up to 7 cameras

Video-Equestre-Pro is a multifunctional software that can replace a real professional video control room.

On the input side, it is capable of :

> Capture and record up to 7 USB, IP, HDMI or SDI cameras.

> Create and generate up to 7 channels of video inserts such as images, advertising videos, slideshows, timing inserts (start list, ranking, information about the competitor in the race, etc.).

On the output side, this information can be sent to :

> A giant LED panel with the BlackBox on an Ethernet network or in HDMI. You can display a camera with graphics and logos, create a timing scenario in the colours of your competition or display only slideshows of advertisements.

> Video-Clips-Pro. The participant is filmed during his race with the cameras. The software takes care of recording the participant, adding

the programmed graphic overlays (logos, time, name, ranking,...), cutting the videos from the cameras and sending the final edited video to the live Publish. The participant will be able to see his video next to his result on the live internet.

All this handling is done AUTOMATICALLY, no additional operator is needed to make the system work.

> WebTV-Pro. This output allows you to create a video stream and send it to the internet. The stream can be viewed on the Publish or on a dedicated web page. In automatic mode, you can film your competitions and broadcast the results by showing the landscape for example.

With the help of an operator, you can move the cameras and follow a competitor in the race. You then take on the role of director of your own TV channel.

TECHNICAL LISTING OF Video-Equestre-Pro

- 7 camera inputs to choose from: IP, HDMI, SDI, USB.
- 7 Media to choose from: Fully customisable overlays with animations, Slideshows, Logos, Slow motion on clips.
- 4 possible outputs: Blackbox, Clips-Pro, WebTV, PC screen, non Vola big screen (HDMI, SDI, VGA, DVI).
- Chroma keying support (green background).
- PIP and CROP support (picture-in-picture, cutting out part of the image).
- Layer management to mix inputs to outputs.
- Support for joystick control of Vola cameras (PTZ cameras).





A problem, a repair?

Download the after-sales service file
using the QR Code below
or go to
<http://www.vola.fr/fr/timing/catalogue>



Finish-Pro 2D Video Camera



ALIGNMENT & SHARPNESS = CHILD'S PLAY

With 2D mode you view the finish line as you see it. It's easy to overlap the finish line with the camera lens. We have also integrated a wireless live viewing on a smartphone of the 2D stream.



EXTREME SENSITIVITY TO LIGHT

High passing speed, low light and the proportions of moving objects are difficult to reconcile. The Video-Finish-Pro has a greatly increased sensitivity video sensor. We have added an algorithm for stretching the film during recording. This procedure reduces the speed of acquisition whilst keeping the right proportion for movement.



LIMIT THE VOLUME TO BE TRANSPORTED

We wanted a small camera. Why burden yourself with bulky equipment, modern techniques intensify the power and outside of a Lap-top, a Video-Finish-Pro fits in a 340x280x120mm suitcase, with a 10m cable included !



Video-Finish-Pro 2D / Ref. VT10-12

- The pack includes:
- The camera equipped with an f: 16mm lens and its protective case.
 - A license to use the Video-Finish-Pro software (to download).
 - A coded dongle.
 - A 10m fibre link.
 - A WiFi access point.
 - A user manual.

TIPS & TRICKS

WHAT YOU NEED TO KNOW

RECOMMENDATION OF PRODUCTS

All the products offered to you have been tested and approved by the Vola team. They are professional products adapted to your needs and constraints. The advanced knowledge of these products allows us to keep a great control of your installations and thus to advise you and to help you in the best possible way.



A DONGLE, WHAT IS IT?

The dongle looks like a USB stick but... no, it's not! The dongle is a software security device. It has the license key to your software that allows you to use it. The dongle can be swapped to another computer (which is correctly set up), if you have a problem with your main computer. It will then unlock the software on the spare computer.

SOFTWARE CONFIGURATIONS

Layout configurations and scenarios can be saved and restored in our software. Once you have made your customisations, save them on an independent medium (USB key, hard disk, email). In this way, you can be sure to find your work in case of breakage on the timing PC or on the character generator. For example, you can save :

- Your display panel layout,
- Your edit sheet layout,
- Your specific category table.

Think about it before it's too late.

OUR OPTIONS HIGHLY RECOMMENDED



THE MANUAL SWITCH

The manual switch will be useful for the jury to manage the stopping and restarting of times during the events.

For the convenience of the timing, it is advisable to wire the manual switch to the stopwatch and give it to the jury next to you.

MANUAL CONTACTOR DOUBLING BOX

The transmission of timing impulses is generally done by radio wave. In case of disturbances, these impulses may not reach the stopwatch. The doubling box allows you to apply a manual impulse in case of problem. It can be connected to the Timy via the multi-pin socket.

COMPUTER SECURITY

The often hostile environment of competition stadiums does not always guarantee electrical stability. It is therefore necessary to equip the timing booths with a UPS. As video generators are extremely demanding in terms of power supply, an inverter is highly recommended to avoid any unpleasant surprises. This option will be proposed to you for your future installations.



CABLE ADVICE

Cables are central elements in the installation. They ensure that the various devices are connected to each other in a sound manner. Whether serial, Ethernet, power or banana cables:

- Their condition must be checked regularly,
- They must be stored correctly: not tangled, in a dry place and preferably in the open air,
- They should not be bent to the extreme: bending a cable beyond its maximum bending radius irreversibly damages the cable,
- Cables become more brittle in the cold. Be careful when handling them.



IMPORTS / EXPORTS

Import your competitors and their points and export the results for approval. Equestre-Pro supports the following formats:

	Import	Export XML
FEI	yes	yes
FFE	yes	yes
SIF	yes	yes

SUPER-USEFUL LINKS

French Equestrian Federation	https://www.ffe.com
French Equestrian Society	https://www.shf.eu
SHF Video	https://shf-video.com
International Equestrian Federation	https://www.fei.org

TRAINING

Like all sports, you have to train to progress. You have to get involved and immerse yourself in the equipment to know how to handle it. It is not something you are born with. As you use the equipment, you will quickly gain experience and become better and better at it. But don't lose your touch in the off-season, stay connected and active!

BATTERIES AND ACCUMULATORS



Timing devices can be powered by batteries or cells. The management of these devices is different.

FOR BATTERIES :

- The condition of the batteries must be checked before timing.
- Always have spare batteries available.
- If the device is not used for a long time, remove the batteries before storing the device.

FOR ACCUMULATORS :

- Accumulators must be fully charged before timing.
- The device should never be stored with discharged accumulators .
- If the device will not be used for a long period of time (e.g. summer season), charge the accumulators before storing the device.
- It is recommended to charge the accumulators every 4 months if the device is not used.

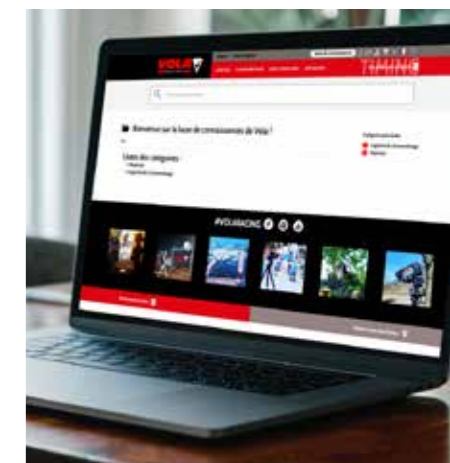
THE KNOWLEDGE KNOWLEDGE BASE

Log on to vola.fr, Timing section and click on «Knowledge Base». Discover numerous articles on software and hardware.

From learning to perfecting, this knowledge base aims to give you the keys to success.

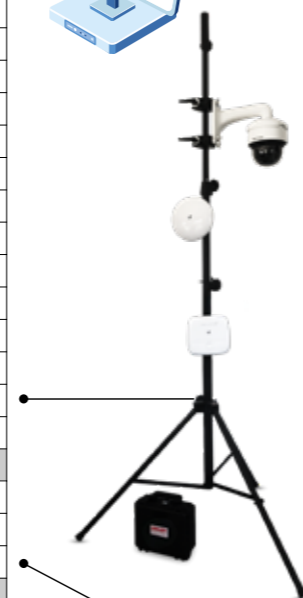
Can't find an article that matches your search? Send an e-mail to vola@vola.fr and we will answer you as soon as possible!

Stay tuned :)



SOFTWARE & HARDWARE VOLA

	SOFTWARE VOLA
	EQUESTRE-PRO SUITE
CLEQ00	LICENCE EQUESTRE-PRO
CLEQ00/U	UPDATE EQUESTRE-PRO
CLEQ01	LICENCE DISPLAY-JUMPING-PRO
CLEQ01/U	UPDATE DISPLAY-JUMPING-PRO
CLEQ02	ONE YEAR RENTAL ABO PUBLISH-EQUESTRE-PRO
CLEQ05	ONE YEAR RENTAL VIDEO-EQUESTRE-PRO FOR CLIPS
CLEQ06	ONE YEAR RENTAL VIDEO-EQUESTRE-PRO FOR WEBTV
CLEQ07	LICENCE VIDEO-EQUESTRE-PRO OUTPUT BLACKBOX1
CLEQ07/U	UPDATE VIDEO-EQUESTRE-PRO OUTPUT BLACKBOX1
CLEQ08	LICENCE VIDEO-EQUESTRE-PRO OUTPUT BLACKBOX2
CLEQ08/U	UPDATE VIDEO-EQUESTRE-PRO OUTPUT BLACKBOX2
CLEQ09	LICENCE VIDEO-EQUESTRE-PRO OUTPUT HDMI1
CLEQ09/U	UPDATE VIDEO-EQUESTRE-PRO OUTPUT HDMI1
CLEQ10	LICENCE VIDEO-EQUESTRE-PRO OUTPUT HDMI2
CLEQ10/U	UPDATE VIDEO-EQUESTRE-PRO OUTPUT HDMI2
CLEQ14	LICENCE OVERLAY-EQUESTRE-PRO
CLEQ14/U	UPDATE OVERLAY-EQUESTRE-PRO
	SCOREBOARD-PRO
CLSC00	LICENCE SCOREBOARD-PRO OUTUPT BLACKBOX
CLSC00/U	UPDATE LICENCE SCOREBOARD-PRO OUTPUT BLACKBOX
CLSC01/N	LICENCE SCOREBOARD-PRO OUTUPUT HDMI
CLSC01/NU	OUTUPT SCOREBOARD-PRO OUTUPUT HDMI
	SOFTWARE PROTECTION KEY
CCLE	USB SOFTWARE PROTECTION KEY
	COMPUTER HARDAWRE
	VIDEO-FINISH-PRO
VT10-101	SET CAMERA VIDEO-FINISH-PRO 2D
	COMPUTER HARDAWRE / VIDEO
VT100-101	PROFESSIONAL LAPTOP FOR TIMING
VT100-102	PROFESSIONAL LAPTOP FOR TIMING & 2 VIDEO FLOWS
VT100-103	VIDEO GENERATOR WITH RACK (UP TO 2 VIDEO FLOWS)
VT100-104	VIDEO GENERATOR WITH RACK (UP TO 7 VIDEO FLOWS)
VT100-105	INTEL NUC PC (FOR DISPLAY USE)
VT100-MO	FEE FOR PC / HARDWARE CONFIGURATION
VT100-110	OPTION FOR VIDEO GENERATOR : ACQUISITION INPUT SDI
VT100-111	OPTION FOR VIDEO GENERATOR : SWITCH POE RACKABLE
VT100-112	UPS RACKABLE FOR VIDEO GENERATOR WITH RACK
VT100-113	OPTION FOR UPS : BATTERY EXTENSION
VT100-114	KIT KEYBOARD AZERTY WITH MOUSE
VT100-115	PC MATE FULL HD 24 INCHES
VT5-101	CONVERTER USB/SERIE RS232
VT5-103	CONVERTER USB/4x SERIE RS232
VT100-301	EXTERNAL PTZ CAMERA WITH SUPPORT
VT100-304	JOYSTICK FOR PTZ CAMERA
VT100-401	CONFIGURED ACCESS POINT ETHERNET TO WIFI
VT100-501	MOBILE CAMERA PACK : CAMERA PTZ, BATTERY CASE, INTERFACE BOX , WIFI BRIDGE
VT100-510	TRANSPORT CASE FOR MOBILE CAMERA PACK
	TIMING EQUIPMENT
VT9-200	BASIC SET FOR SCOREBOARD FULL MATRIX COLOR BLACKBOX
VT9-204	MODULES SCOREBOARD OUTDOOR FULL COLOR PITCH 4.8MM PER M²
VT9-202	SET SCOREBOARD DUO FULL MATRIX COLOR P : 4.8MM / 50x200CM BLACKBOX
	TRIPOD
VT80-101	TRIPOD FOR PHOTOCCELL (THREAD PHOTO 1/4)
VT80-102	TRIPOD FOR START CLOCK (THREAD PHOTO 3/8)
VT80-103	TRIPOD FOR CAMERA VIDEO-FINISH-PRO
VT80-201	GUIDE FOR LATERAL MOVEMENT OF CAMERA VIDEO-FINISH-PRO
VT80-202	ADJUSTABLE HEAD 3 AXIS FOR CAMERA VIDEO-FINISH-PRO



ALGE TIMING EQUIPMENT

	TIMER
A1-21	SET TIMER ALGE TIMY3 WTN WITHOUT PRINTER (BATTERIES)
A1-31	SET TIMER ALGE TIMY3 WTN WITH PRINTER (RECHARGABLE BATTERIES)
	TIMER ACCESSORIES
A1-71	ALGE BATTERY PACK NI-MH TIMY2 IMP / TIMY3 WTN WITH PRINTER
A1-73	POWER SUPPLY – CHARGER FOR ALGE TIMY
A1-90	CONTACT BOX C2,C3,C4 SERIAL
A1-91	CONTACT BOX C2,C3,C4
A1-92	CONTACT BOX C2,C3,C4 – WTN
A10-10	MANUAL PUSH BUTTON ALGE
A10-12	WTN MANUAL PUSH BUTTON ALGE
	PHOTOCELL
A2-93	PAIR OF ADAPTER 3/8 - 1/4
A2-12	SET OF ALGE PHOTOCELL WITH REFLECTOR
A2-22	SET OF ALGE PHOTOCELL LONG RANGE
A2-32	SET OF ALGE WTN PHOTOCELL WITH REFLECTOR
A2-42	SET OF ALGE WTN PHOTOCELL LONG RANGE
	DISPLAYBOARD
A4-16	ALGE D-LINE DISPLAY 6 DIGITS H80mm
A4-26	ALGE D-LINE DISPLAY 6 DIGITS H150mm
A4-36	ALGE D-LINE DISPLAY 6 DIGITS H250mm
	LIAISON SANS FILS
A6-10	WTN ALGE RADIO TRANSMISSION
A6-11	CABLE WTN TO BANANA C2,C3,C4
A6-13	SUPPORT RADIO WTN ALGE
A6-20	RADIO TRANSMITTER RF ALGE TED 400mW
A6-31	RADIO RECEIVER RF ALGE TED 400mW
	ACCESSOIRES
A10-13	SERIAL PRINTER FOR ALGE TIMY OR AGLE START CLOCK
A1-70	GPS ANTENNA ALGE FOR TIMY3 OR START CLOCK



SOFTWARE

The other Suites

A History of Software ...

1985

The company Soft Control was formed, which develops its own timing software. The company works on the development of timing software in close partnership with Vola who facilitate the testing on snow.

2003

Vola takes over the timing section of Soft Control. Both divisions, SPORT and TIMING, now share the same identity. New software is developed to support the high demand and Vola is launched into other areas such as automobile, horse riding and cycling.

2012

Faced with the rise of Live Streaming and digital in the broad sense, Vola decides to extend its skills and start in video software allowing live broadcasting and the creation of video clips.

2020

Vola software is used everywhere in the world and in many sports: automobile (circuit and rally), karting, horse riding, winter sports and also for robotics or camel racing! Our Timing division is a team of enthusiasts, always looking for new challenges.



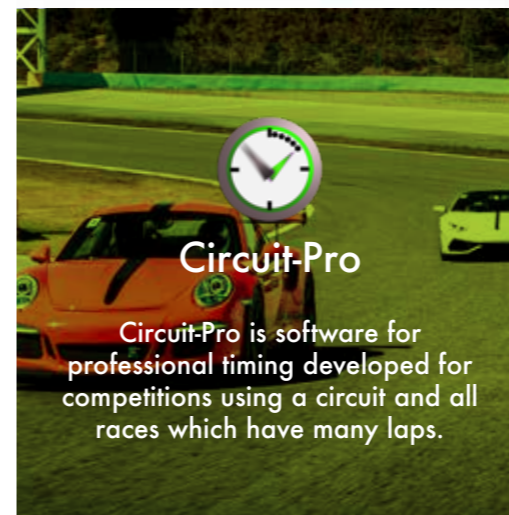
Msports-Pro

MSport-Pro is software for multi-function timing which allows you to time different racing formats without being linked to a regulation.



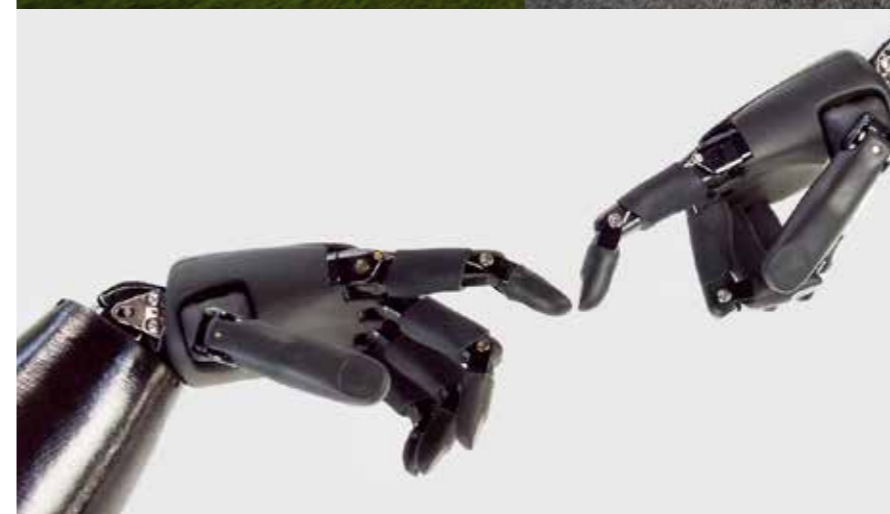
SkiAlp-Pro - SkiNordic-Pro

The «Winter» software allows you to time and broadcast live all Alpine & Nordic ski, snowboard, telemark and speed ski races.



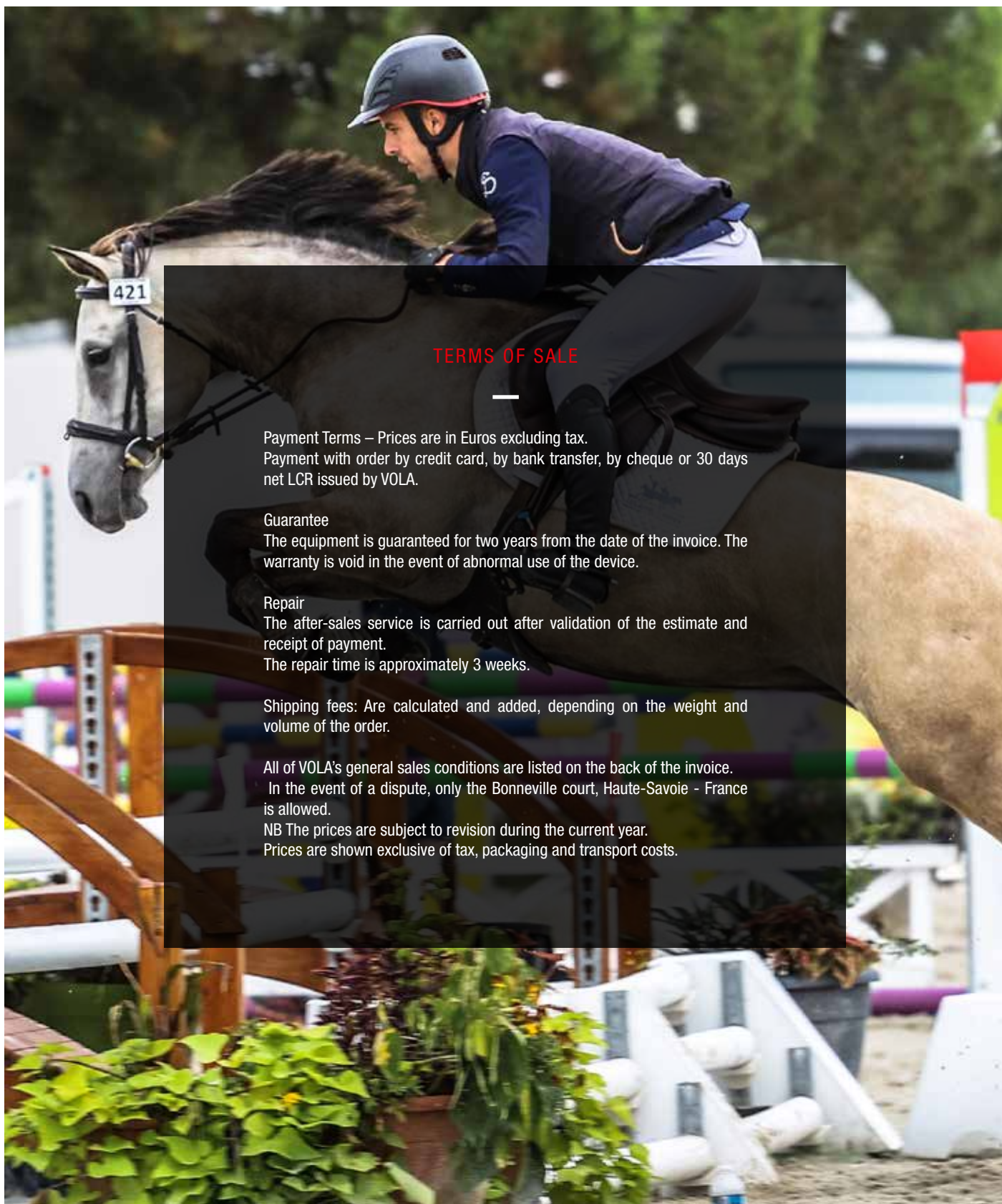
Circuit-Pro

Circuit-Pro is software for professional timing developed for competitions using a circuit and all races which have many laps.



Scoreboard-Pro

Scoreboard-pro is software allowing to send timing information, text and videos to LED display screens in a simple way.



TERMS OF SALE

Payment Terms – Prices are in Euros excluding tax.
Payment with order by credit card, by bank transfer, by cheque or 30 days net LCR issued by VOLA.

Guarantee

The equipment is guaranteed for two years from the date of the invoice. The warranty is void in the event of abnormal use of the device.

Repair

The after-sales service is carried out after validation of the estimate and receipt of payment.

The repair time is approximately 3 weeks.

Shipping fees: Are calculated and added, depending on the weight and volume of the order.

All of VOLA's general sales conditions are listed on the back of the invoice.

In the event of a dispute, only the Bonneville court, Haute-Savoie - France is allowed.

NB The prices are subject to revision during the current year.

Prices are shown exclusive of tax, packaging and transport costs.

sales@vola-racing.ch / vola@vola.fr

.....



[@volaracing_timing](https://www.instagram.com/volaracing_timing)



37, avenue de Saint-Martin / 74190 PASSY / FRANCE

☎ +33 (0)4 50 47 57 20 ✉ vola.fr

